

Brittanys												
Metric	2008	2009	2010	2011	2012	2013	2014	2015	2016	2017	Notes	
Litter #'s & Litter Related Stats	Registered Litters	2,108	1,842	1,680	1,565	1,530	1,484	1,476	1,550	1,552	1,655	# AKC litters registered each year
	Litter Complement	13,341	11,537	10,585	9,773	9,543	9,017	9,200	9,657	9,860	10,613	# Pups in each year's litters (known as the "Complement")
	Average Complement	6.33	6.26	6.30	6.24	6.24	6.08	6.23	6.23	6.35	6.41	Average # of pups per litter
	Individually Registered Pups (to date)	5,736	4,909	4,589	4,379	4,282	3,946	4,206	4,417	4,458	4,048	# Pups from each year's litters individually registered (to date)
	Actual Return Rate (to date)	43.0%	42.6%	43.4%	44.8%	44.9%	43.8%	45.7%	45.7%	45.2%	38.1%	% Pups from each year's litters individually registered (to date)
	Limited Registrations (to date)	307	342	291	336	373	370	379	442	470	423	# Limited Registrations from each year's litters (to date)
	% Complement Registered Limited (to date)	2.3%	3.0%	2.7%	3.4%	3.9%	4.1%	4.1%	4.6%	4.8%	4.0%	% Pups from each year's litters Registered as Limited (to date)
	Limited Revoked (to date)	16	20	16	19	19	14	13	13	6	1	# Limited Revoked Dogs from each year's litters (to date)
	Litters from Revoked Limited (to date)	16	18	15	11	18	14	12	10	4	-	Litters involving each year's Revoked Limited (to date)
	Complement Bitches in Conformation	151	144	165	142	142	136	142	164	126	65	# Bitches from each year's litters in Conformation (to date)
	Complement Dogs in Conformation	138	138	152	146	143	125	135	139	97	64	# Males from each year's litters in Conformation (to date)
	Total Complement in Conformation (to date)	289	282	317	288	285	261	277	303	223	129	Total from each year's litters in Conformation (to date)
	% Complement in Conformation (to date)	2.2%	2.4%	3.0%	2.9%	3.0%	2.9%	3.0%	3.1%	2.3%	1.2%	% of each year's litters in Conformation (to date)
	Complement Bitches Bred	713	610	575	553	511	435	413	328	126	19	Bitches from each year's litters that have been bred (to date)
	Complement Dogs Bred	489	398	346	305	290	236	224	189	113	20	Males from each year's litters that have been bred (to date)
	Total Complement Bred (to date)	1,202	1,008	921	858	801	671	637	517	239	39	Total from each year's litters that have been bred (to date)
% Complement Bred (to date)	9.0%	8.7%	8.7%	8.8%	8.4%	7.4%	6.9%	5.4%	2.4%	0.4%	% of each year's litters that have been bred (to date)	

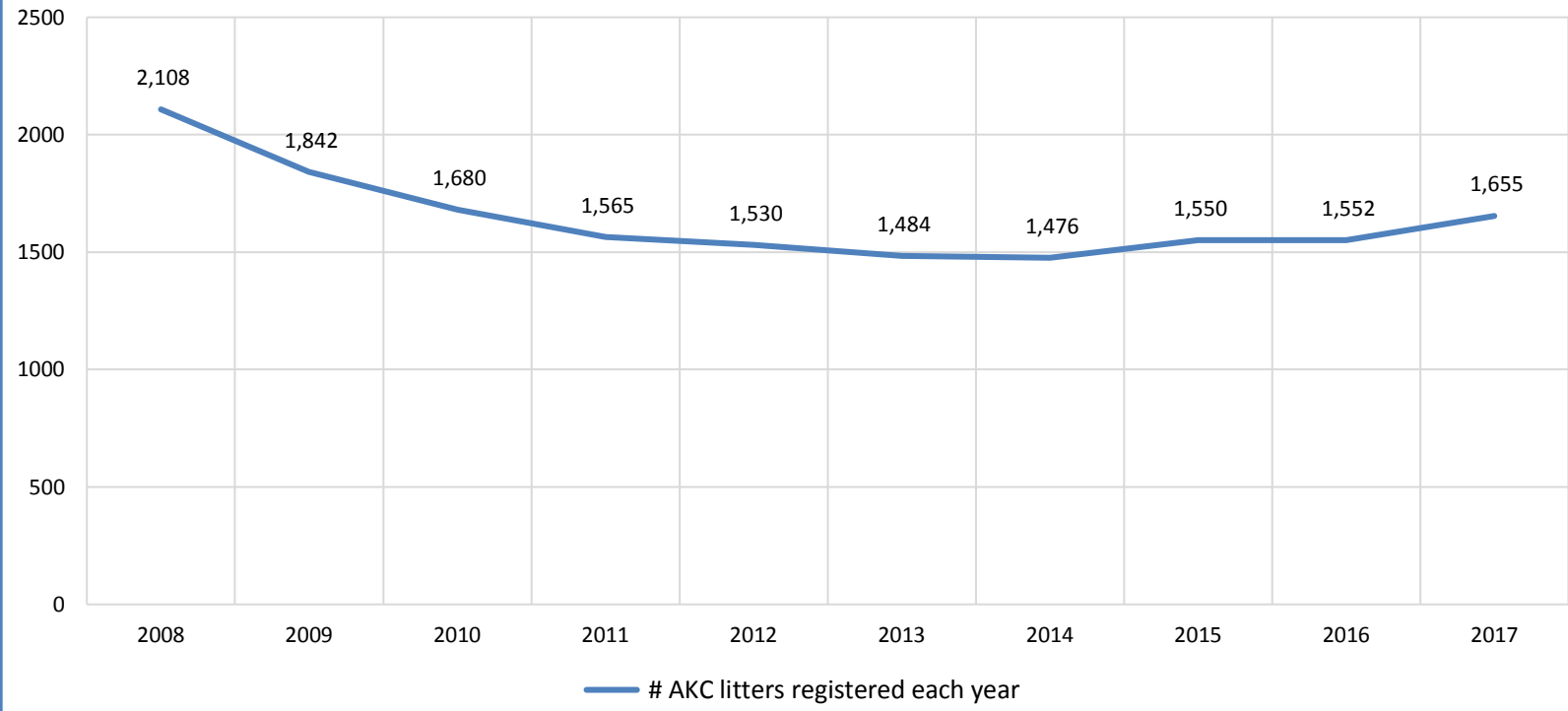
Dog #'s & Dog Related Stats	AKC Dog Registrations	6,209	5,331	4,800	4,612	4,435	4,091	4,308	4,371	4,584	5,018	# Registered from AKC Litters during each year
	FSS Registrations	-	-	-	-	-	-	-	-	-	-	# of FSS Dog Registrations each year
	Conditional Registrations	28	20	10	4	5	5	2	7	2	-	# of Conditional Registrations each year
	Open Registrations	6	10	4	3	3	8	3	3	13	7	# of Open Registrations each year
	Foreign Registrations	25	20	20	22	13	17	26	18	26	18	# of Foreign-born Registrations each year
	Total Dogs Registered	6,268	5,381	4,834	4,641	4,456	4,121	4,339	4,399	4,625	5,043	Total Dog Registrations each year
	Unique Bitches in Conformation (each year)	526	479	501	515	500	487	506	497	470	449	Unique # of bitches in Conformation each year
	Unique Dogs in Conformation (each year)	504	480	491	487	492	484	473	452	445	425	Unique # of males in Conformation each year
	Total Unique in Conformation (each year)	1,030	959	992	1,002	992	971	979	949	915	874	Unique # in Conformation each year
	Unique Bitches Bred (each year)	1,947	1,702	1,541	1,458	1,391	1,357	1,320	1,380	1,377	1,464	Unique # bitches bred each year
	Unique Dogs Bred (each year)	1,571	1,362	1,213	1,146	1,048	1,029	988	1,039	1,001	1,071	Unique # males bred each year
Total Bred (each year)	3,518	3,064	2,754	2,604	2,439	2,386	2,308	2,419	2,378	2,535	Unique # bred each year	

% Change YOY	2008	2009	2010	2011	2012	2013	2014	2015	2016	2017	
Litters	N/A	-12.6%	-8.8%	-6.8%	-2.2%	-3.0%	-0.5%	5.0%	0.1%	6.6%	These %'s are calculated to show the change each year from the previous year.
Litter Complement	N/A	-13.5%	-8.3%	-7.7%	-2.4%	-5.5%	2.0%	5.0%	2.1%	7.6%	
Registered Pups	N/A	-14.4%	-6.5%	-4.6%	-2.2%	-7.8%	6.6%	5.0%	0.9%	-9.2%	

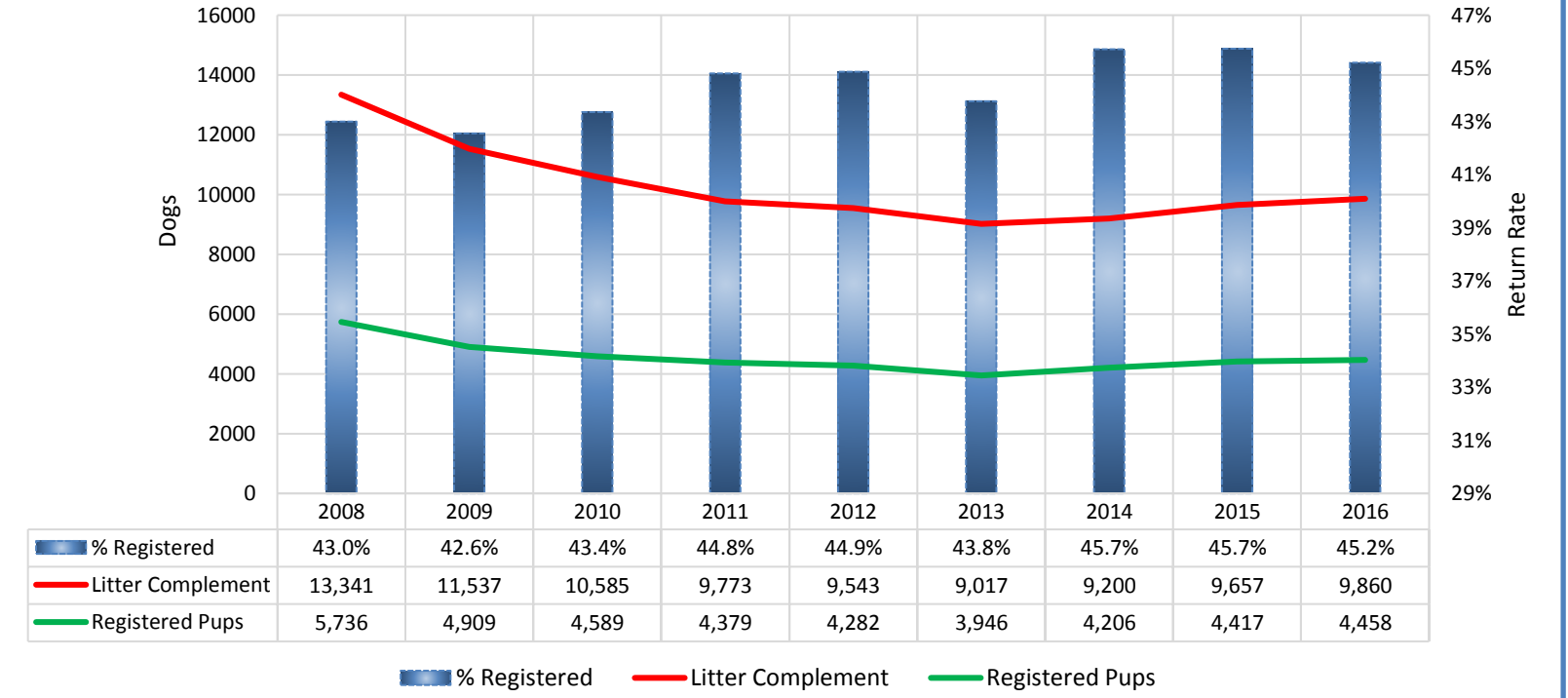
% Change Relative 2008	2008	2009	2010	2011	2012	2013	2014	2015	2016	2017	
Litters	0.0%	-12.6%	-20.3%	-25.8%	-27.4%	-29.6%	-30.0%	-26.5%	-26.4%	-21.5%	These %'s are calculated to show the change each year compared to 2008.
Litter Complement	0.0%	-13.5%	-20.7%	-26.7%	-28.5%	-32.4%	-31.0%	-27.6%	-26.1%	-20.4%	
Registered Pups	0.0%	-14.4%	-20.0%	-23.7%	-25.3%	-31.2%	-26.7%	-23.0%	-22.3%	-29.4%	

Brittanys

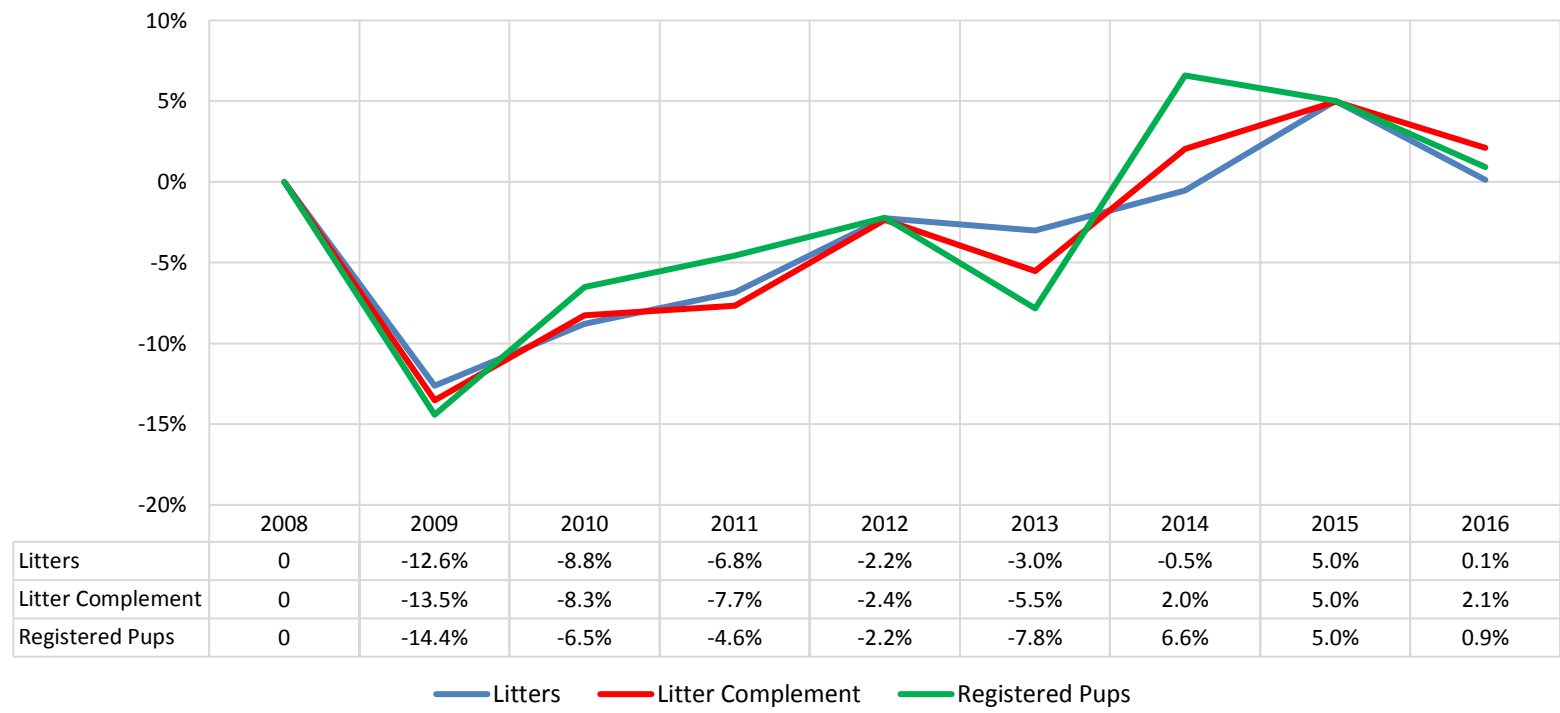
Litters



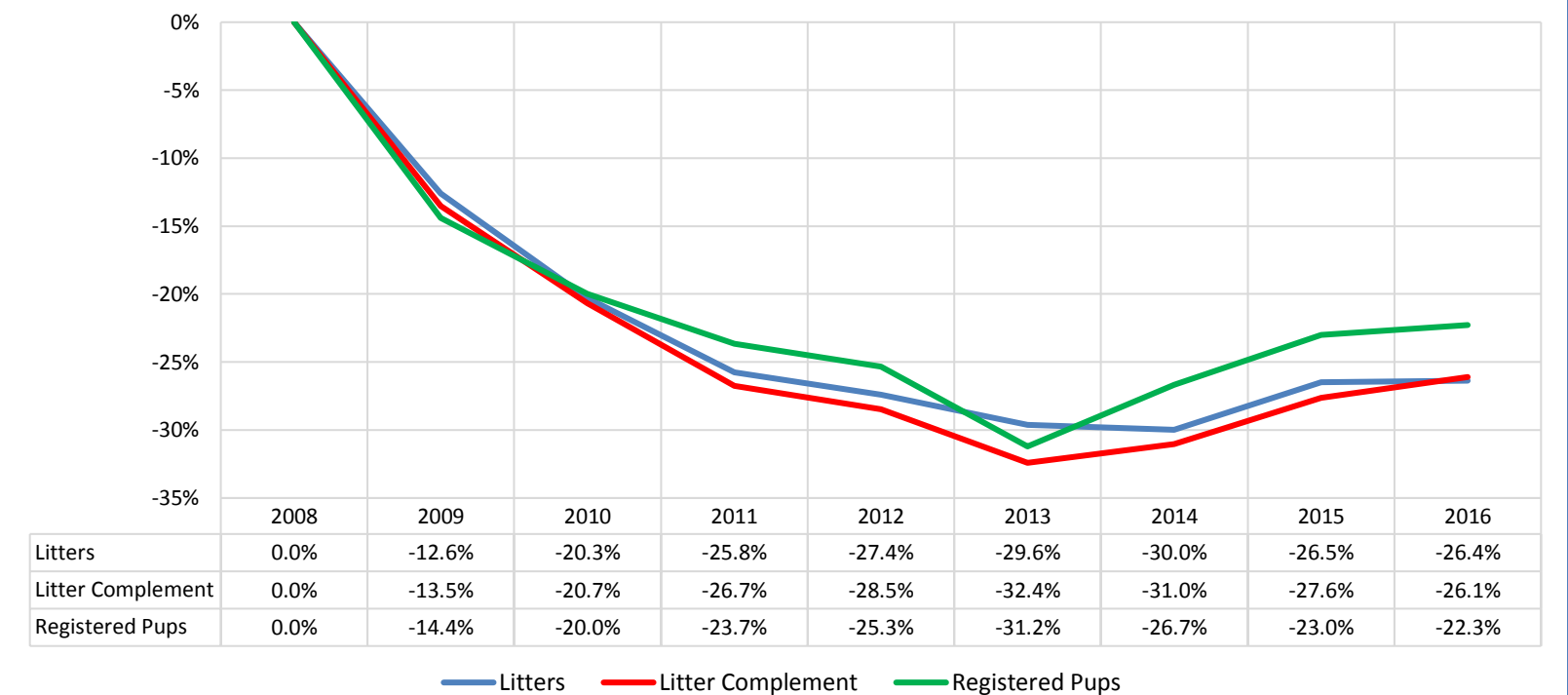
% of Each Year's Litter Complement that were Eventually Registered



Litter Data: % Change from Previous Year (YoY)

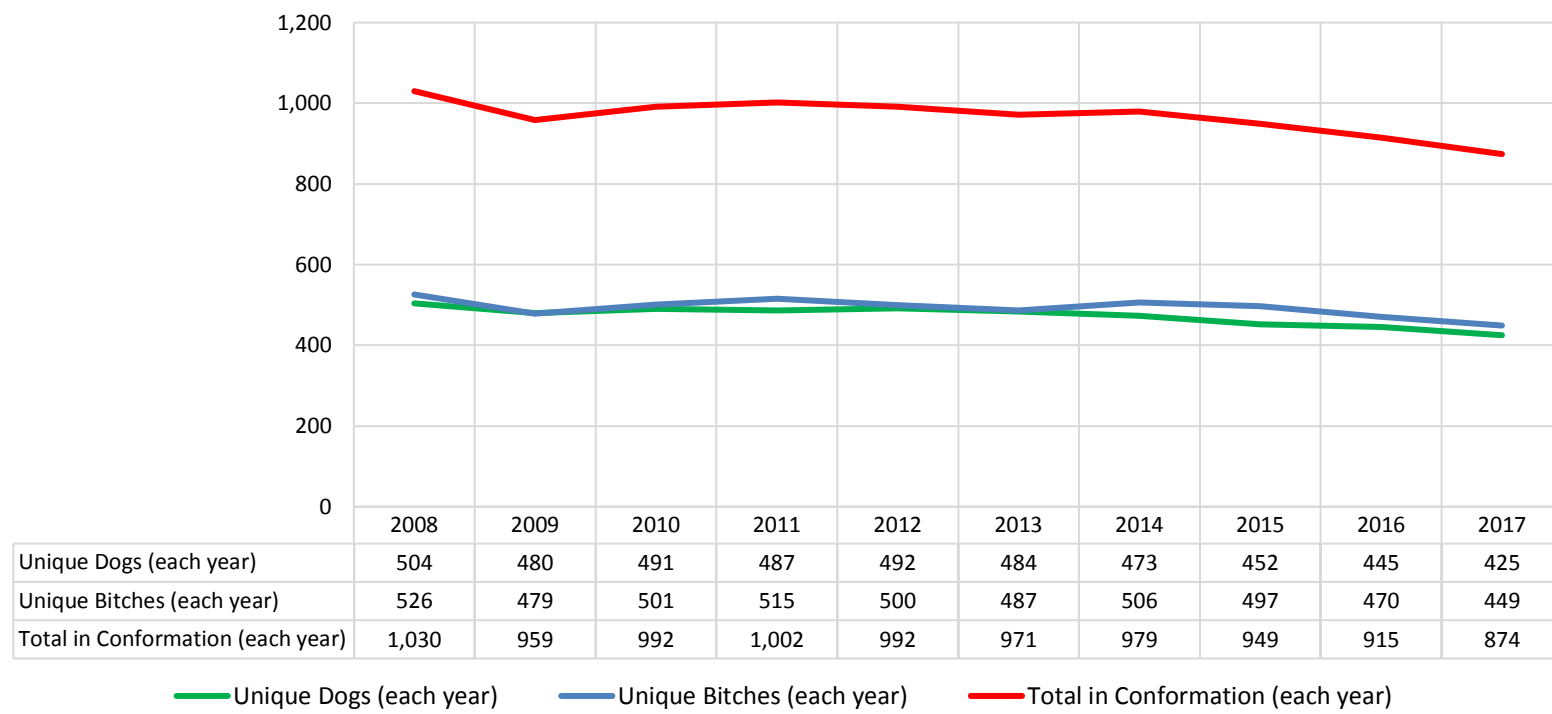


Litter Data: % Change Relative to 2008

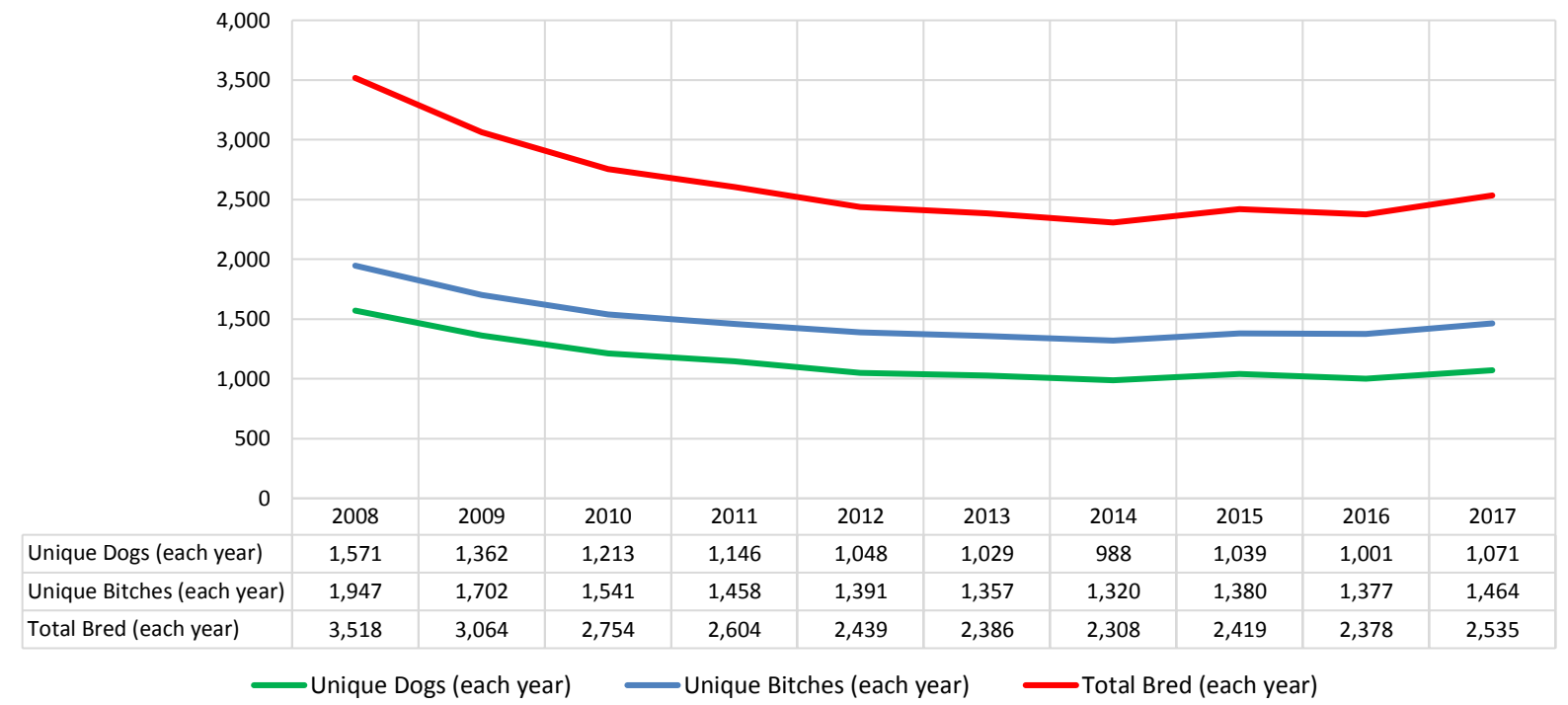


Brittanys

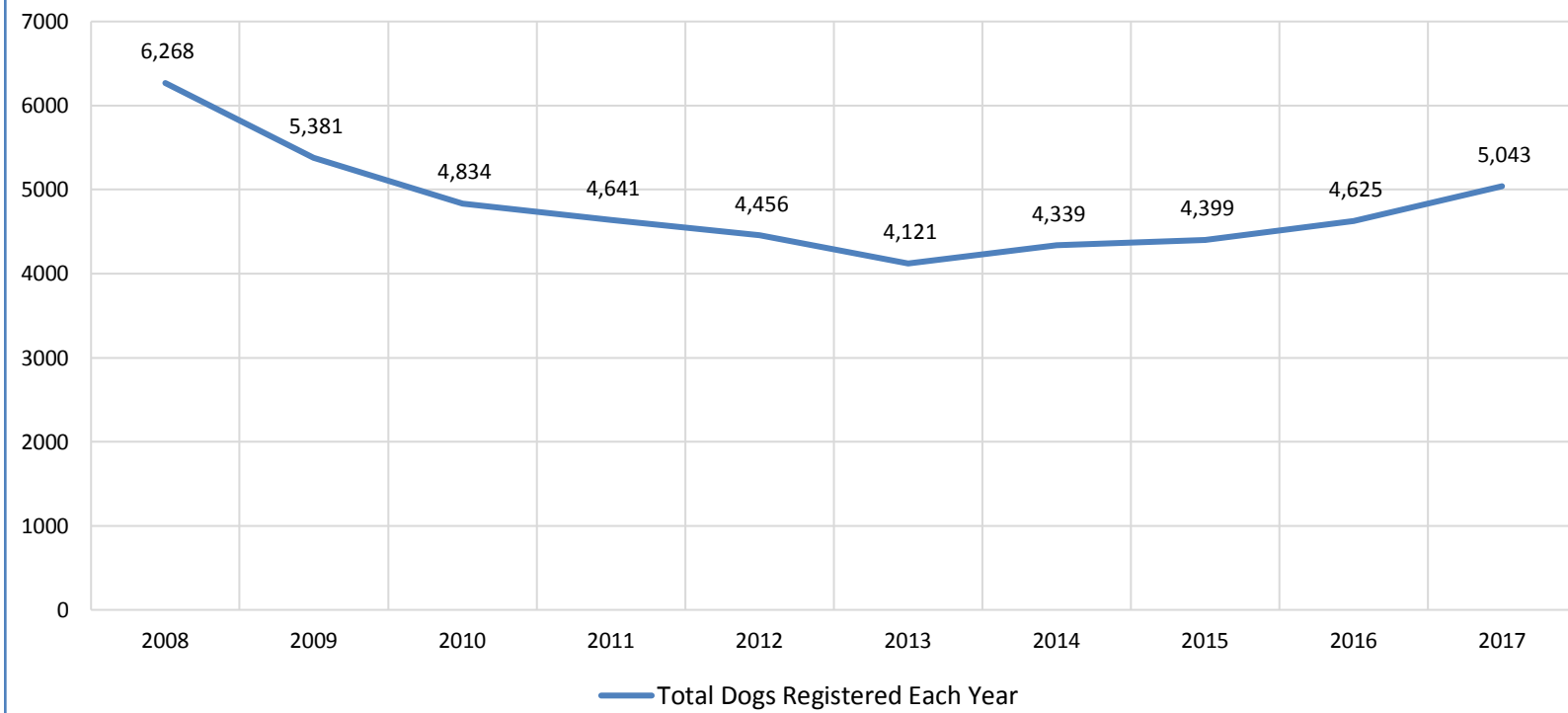
Competing: Unique Individual Dogs & Bitches in Conformation Each Year



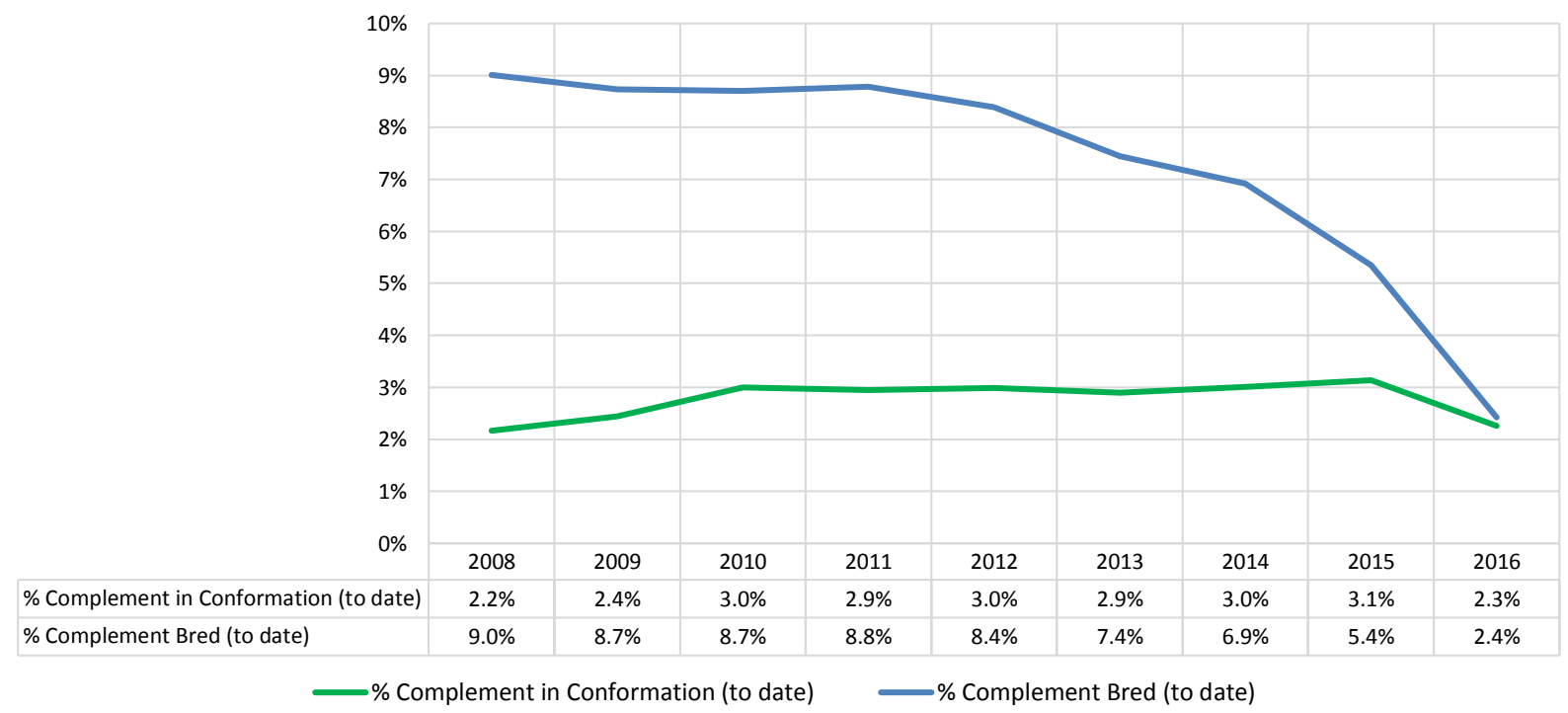
Breeding: Unique Individual Dogs & Bitches Bred Each Year



Dogs Registered (including FSS, Open, Conditional & Foreign)



% of Each Year's Litter Complement that have been Shown or Bred (to date)



Sporting Group												
	Metric	2008	2009	2010	2011	2012	2013	2014	2015	2016	2017	Notes
Litter #'s & Litter Related Stats	Registered Litters	67,977	59,900	54,015	49,576	47,713	47,225	47,971	50,154	55,043	60,003	# AKC litters registered each year
	Litter Complement	468,138	411,434	369,488	340,153	326,975	324,144	328,812	344,277	383,153	422,149	# Pups in each year's litters (known as the "Complement")
	Average Complement	6.89	6.87	6.84	6.86	6.85	6.86	6.85	6.86	6.96	7.04	Average # of pups per litter
	Individually Registered Pups (to date)	174,771	151,369	136,881	132,320	127,471	130,208	135,249	140,998	153,543	138,068	# Pups from each year's litters individually registered (to date)
	Actual Return Rate (to date)	37.3%	36.8%	37.0%	38.9%	39.0%	40.2%	41.1%	41.0%	40.1%	32.7%	% Pups from each year's litters individually registered (to date)
	Limited Registrations (to date)	22,756	22,244	21,681	23,098	24,160	26,527	28,884	32,806	38,653	38,314	# Limited Registrations from each year's litters (to date)
	% Complement Registered Limited (to date)	4.9%	5.4%	5.9%	6.8%	7.4%	8.2%	8.8%	9.5%	10.1%	9.1%	% Pups from each year's litters Registered as Limited (to date)
	Limited Revoked (to date)	541	590	478	516	576	636	629	633	424	138	# Limited Revoked Dogs from each year's litters (to date)
	Litters from Revoked Limited (to date)	495	534	429	451	521	573	560	520	316	102	Litters involving each year's Revoked Limited (to date)
	Complement Bitches in Conformation	4,474	4,235	4,189	4,145	4,147	3,924	3,838	3,859	3,664	2,258	# Bitches from each year's litters in Conformation (to date)
	Complement Dogs in Conformation	3,627	3,315	3,276	3,290	3,228	2,907	3,071	2,788	2,717	1,634	# Males from each year's litters in Conformation (to date)
	Total Complement in Conformation (to date)	8,101	7,550	7,465	7,435	7,375	6,831	6,909	6,647	6,381	3,892	Total from each year's litters in Conformation (to date)
	% Complement in Conformation (to date)	1.7%	1.8%	2.0%	2.2%	2.3%	2.1%	2.1%	1.9%	1.7%	0.9%	% of each year's litters in Conformation (to date)
	Complement Bitches Bred	20,527	18,728	17,648	16,841	17,079	17,110	16,118	13,083	6,791	962	Bitches from each year's litters that have been bred (to date)
	Complement Dogs Bred	12,785	10,937	9,734	9,101	8,638	8,164	7,926	6,713	4,605	791	Males from each year's litters that have been bred (to date)
	Total Complement Bred (to date)	33,312	29,665	27,382	25,942	25,717	25,274	24,044	19,796	11,396	1,753	Total from each year's litters that have been bred (to date)
% Complement Bred (to date)	7.1%	7.2%	7.4%	7.6%	7.9%	7.8%	7.3%	5.8%	3.0%	0.4%	% of each year's litters that have been bred (to date)	

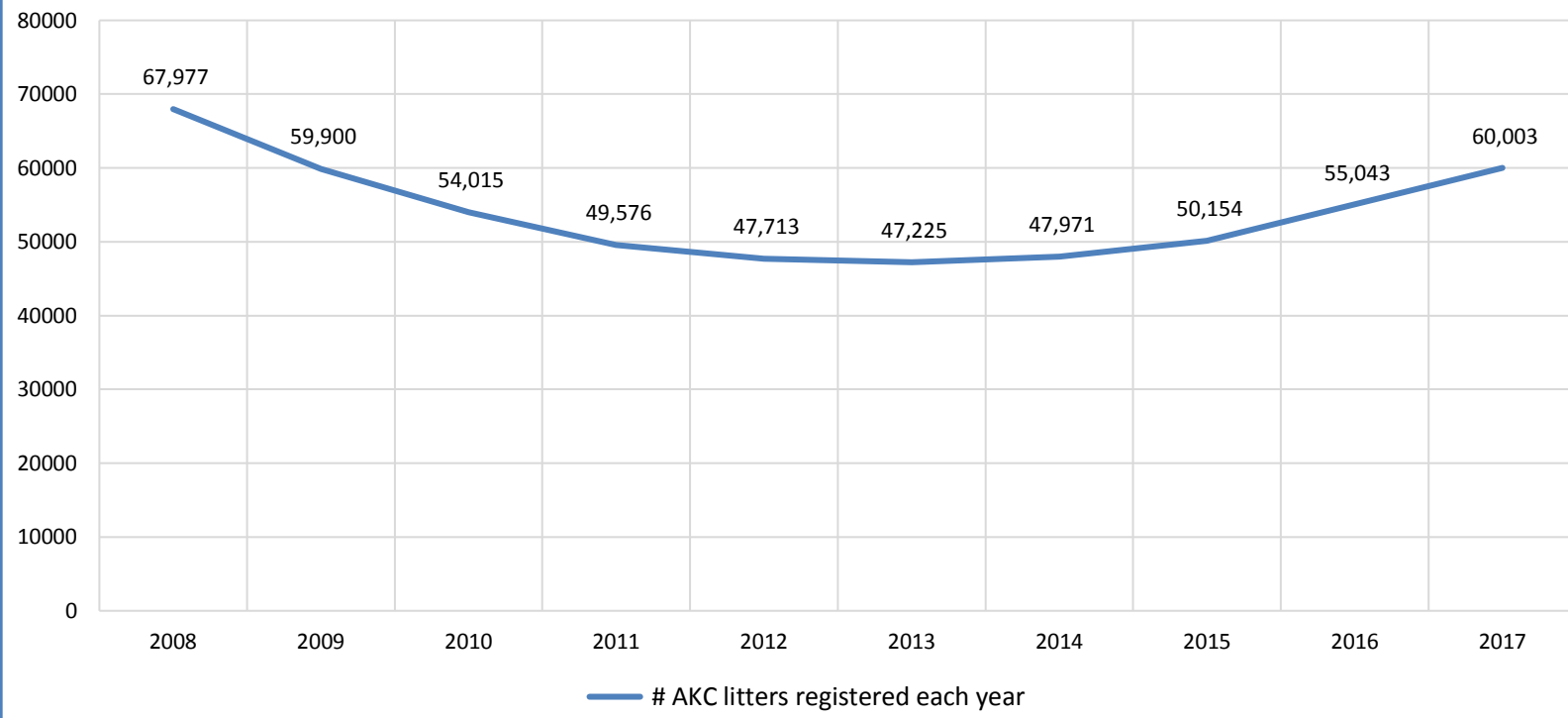
Dog #'s & Dog Related Stats	AKC Dog Registrations	186,524	166,059	144,566	138,296	131,093	131,390	135,737	141,486	157,493	170,699	# Registered from AKC Litters during each year
	FSS Registrations	305	133	99	164	127	116	106	40	15	10	# of FSS Dog Registrations each year
	Conditional Registrations	346	375	361	332	339	289	352	363	374	470	# of Conditional Registrations each year
	Open Registrations	274	238	284	255	342	295	300	296	310	332	# of Open Registrations each year
	Foreign Registrations	1,141	1,004	962	918	1,030	972	1,092	1,106	1,141	1,338	# of Foreign-born Registrations each year
	Total Dogs Registered	188,590	167,809	146,272	139,965	132,931	133,062	137,587	143,291	159,333	172,849	Total Dog Registrations each year
	Unique Bitches in Conformation (each year)	14,117	13,307	13,101	12,999	12,626	12,449	12,096	11,824	11,775	11,570	Unique # of bitches in Conformation each year
	Unique Dogs in Conformation (each year)	11,860	11,459	11,048	10,808	10,647	10,399	10,007	9,788	9,459	9,323	Unique # of males in Conformation each year
	Total Unique in Conformation (each year)	25,977	24,766	24,149	23,807	23,273	22,848	22,103	21,612	21,234	20,893	Unique # in Conformation each year
	Unique Bitches Bred (each year)	60,214	53,452	48,408	44,470	42,192	41,521	41,989	43,838	47,581	51,465	Unique # bitches bred each year
	Unique Dogs Bred (each year)	42,328	37,536	33,612	30,471	27,951	27,069	26,730	27,269	28,932	30,925	Unique # males bred each year
Total Bred (each year)	102,542	90,988	82,020	74,941	70,143	68,590	68,719	71,107	76,513	82,390	Unique # bred each year	

% Change YOY		2008	2009	2010	2011	2012	2013	2014	2015	2016	2017	
Litters	N/A	-11.9%	-9.8%	-8.2%	-3.8%	-1.0%	1.6%	4.6%	9.7%	9.0%		These %'s are calculated to show the change each year from the previous year.
Litter Complement	N/A	-12.1%	-10.2%	-7.9%	-3.9%	-0.9%	1.4%	4.7%	11.3%	10.2%		
Registered Pups	N/A	-13.4%	-9.6%	-3.3%	-3.7%	2.1%	3.9%	4.3%	8.9%	-10.1%		

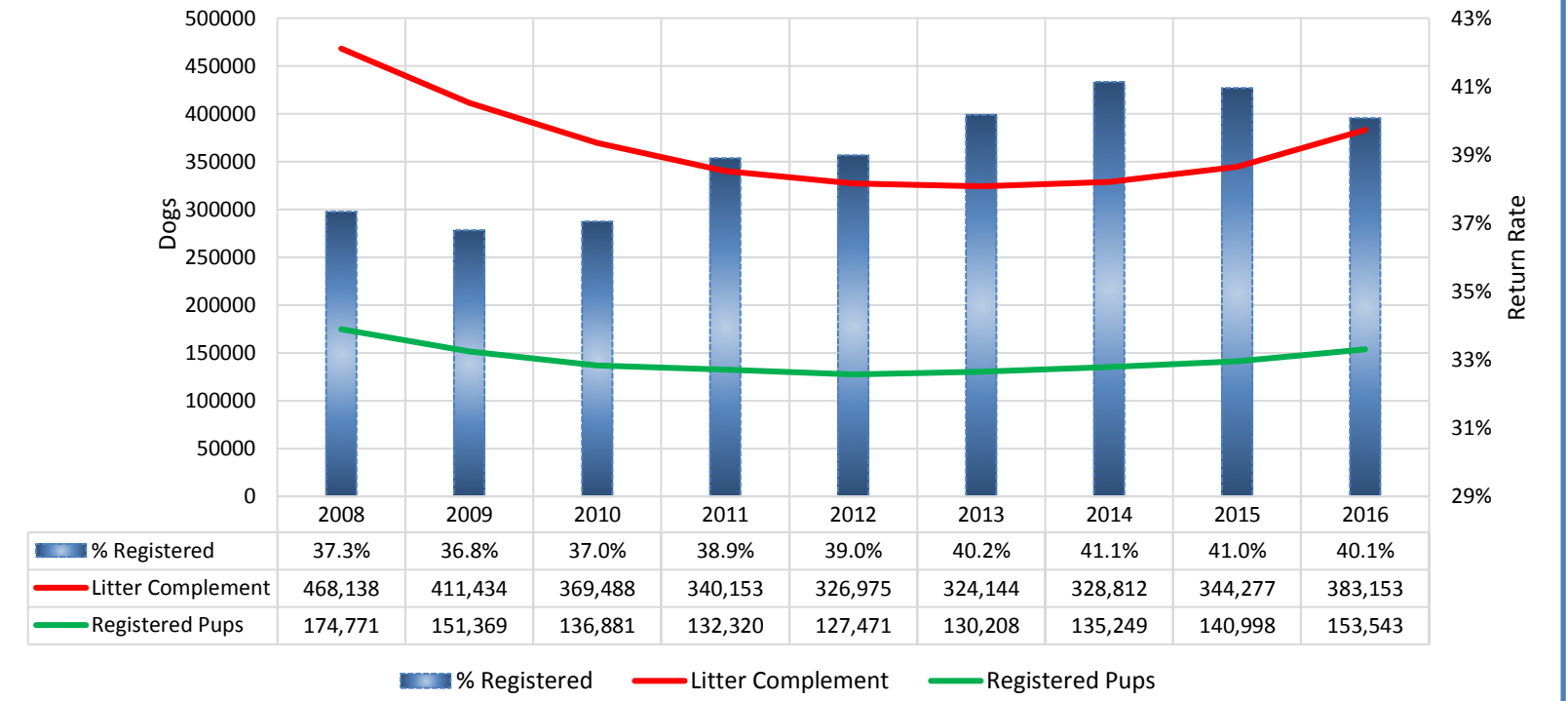
% Change Relative 2008		2008	2009	2010	2011	2012	2013	2014	2015	2016	2017	
Litters	0.0%	-11.9%	-20.5%	-27.1%	-29.8%	-30.5%	-29.4%	-26.2%	-19.0%	-11.7%		These %'s are calculated to show the change each year compared to 2008.
Litter Complement	0.0%	-12.1%	-21.1%	-27.3%	-30.2%	-30.8%	-29.8%	-26.5%	-18.2%	-9.8%		
Registered Pups	0.0%	-13.4%	-21.7%	-24.3%	-27.1%	-25.5%	-22.6%	-19.3%	-12.1%	-21.0%		

Sporting Group

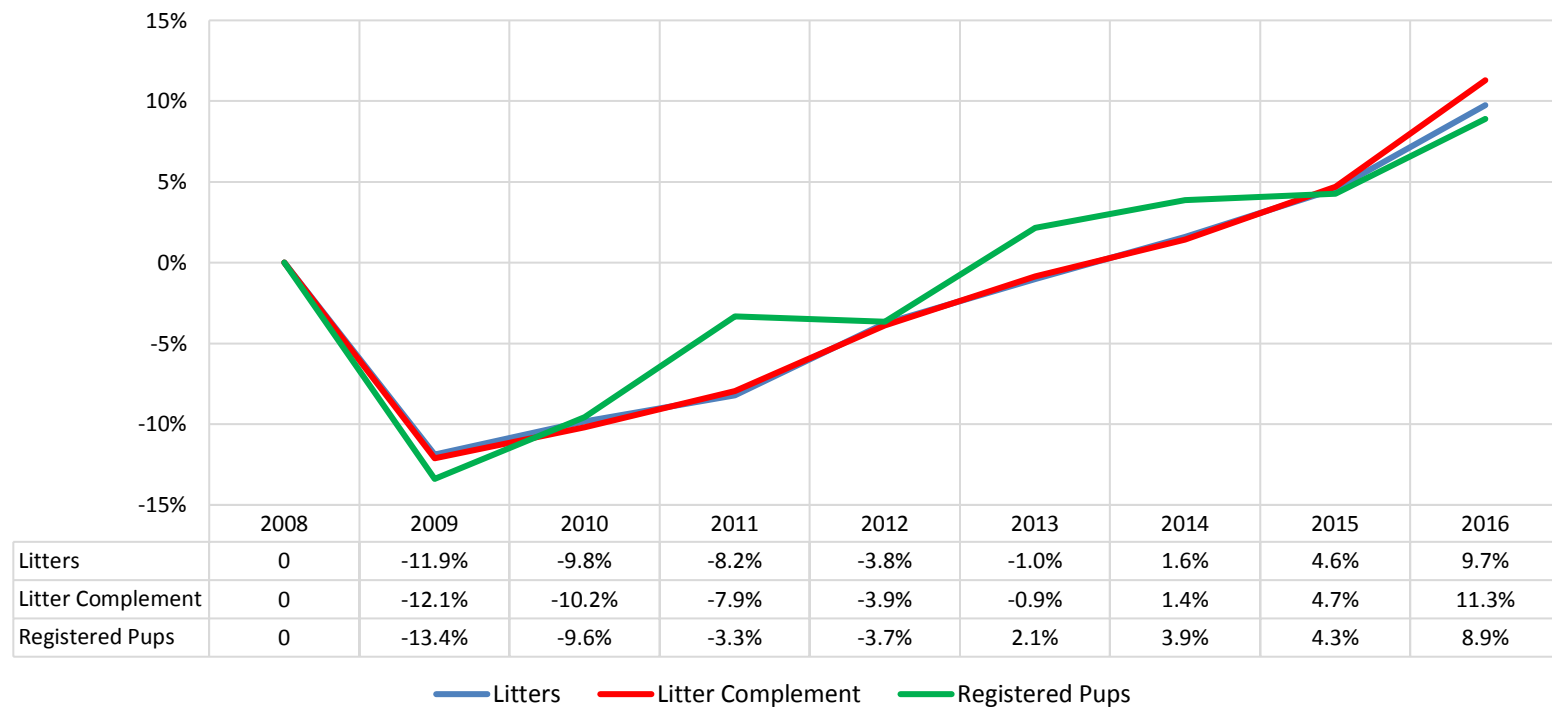
Litters



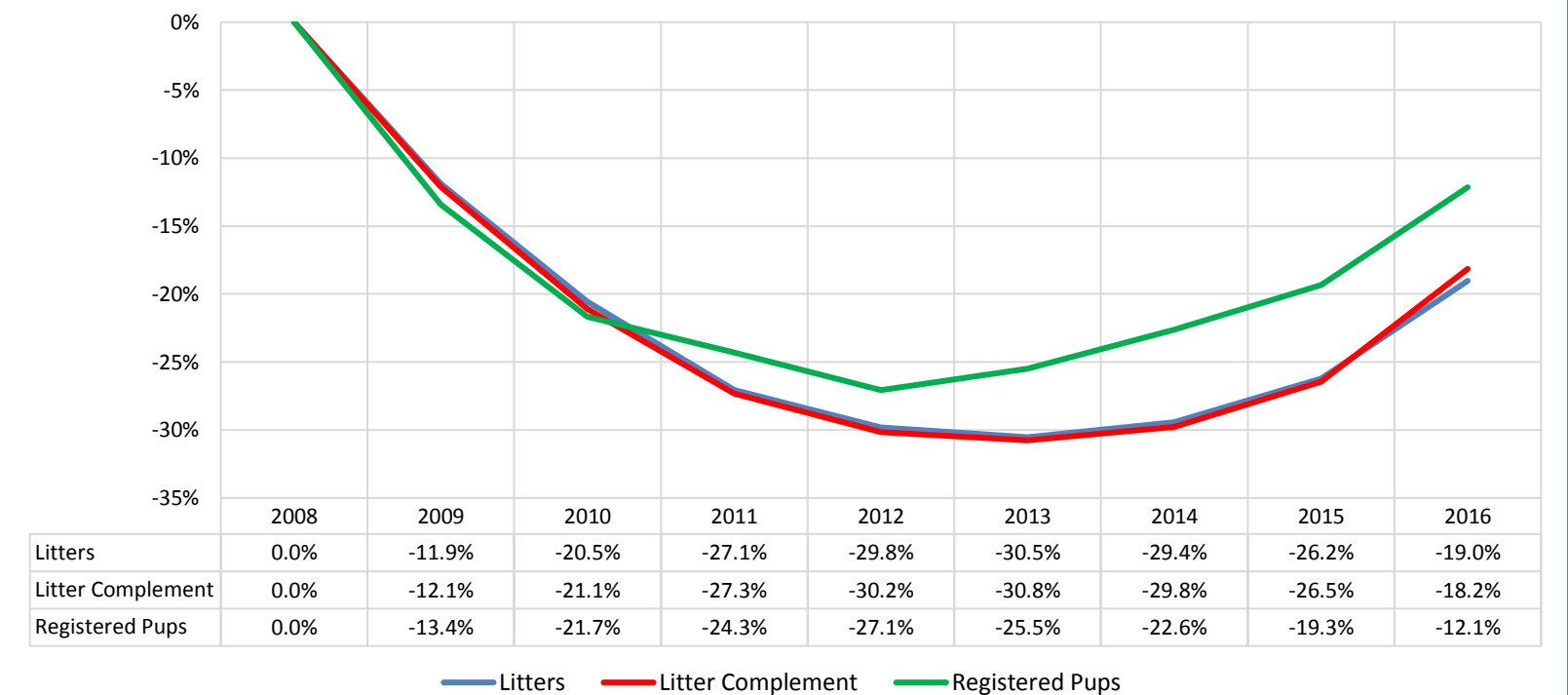
% of Each Year's Litter Complement that were Eventually Registered



Litter Data: % Change from Previous Year (YoY)

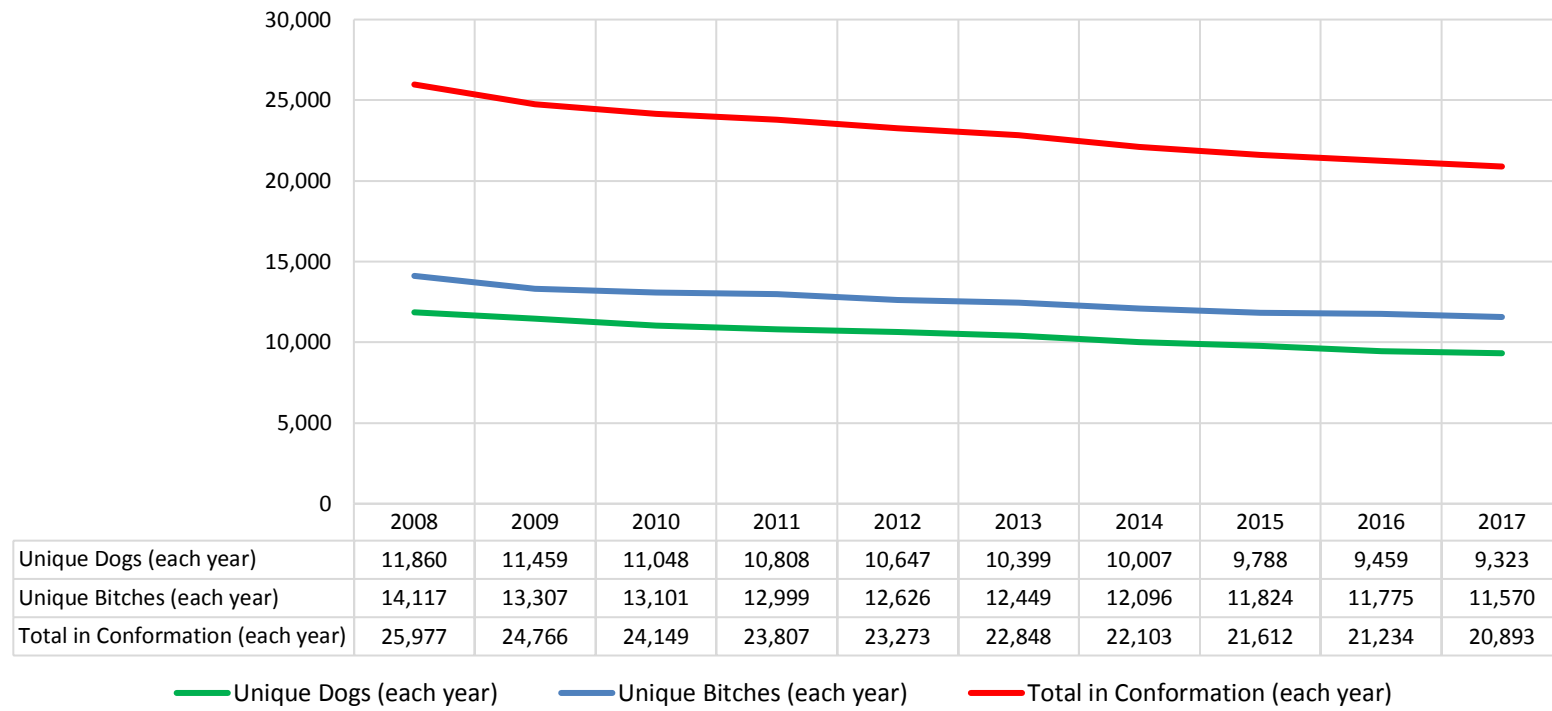


Litter Data: % Change Relative to 2008

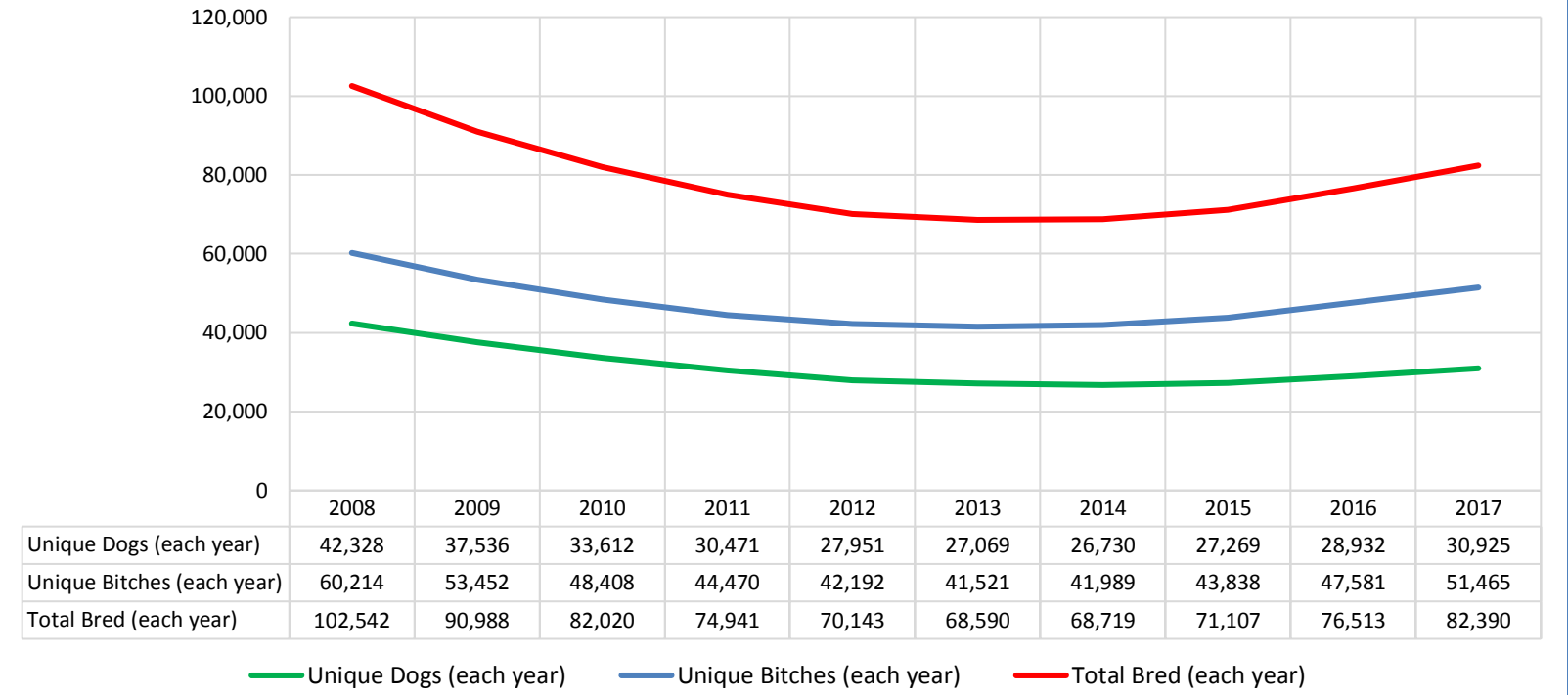


Sporting Group

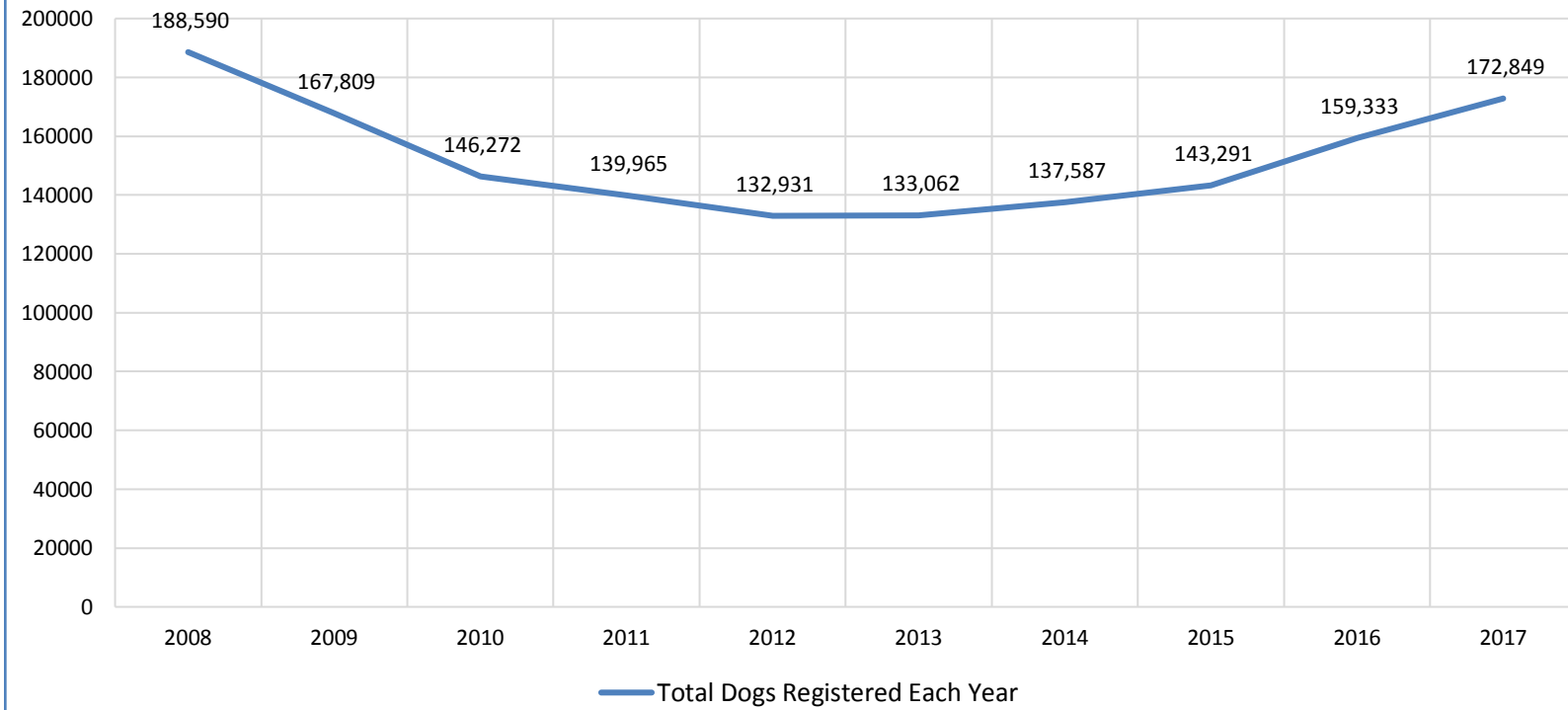
Competing: Unique Individual Dogs & Bitches in Conformation Each Year



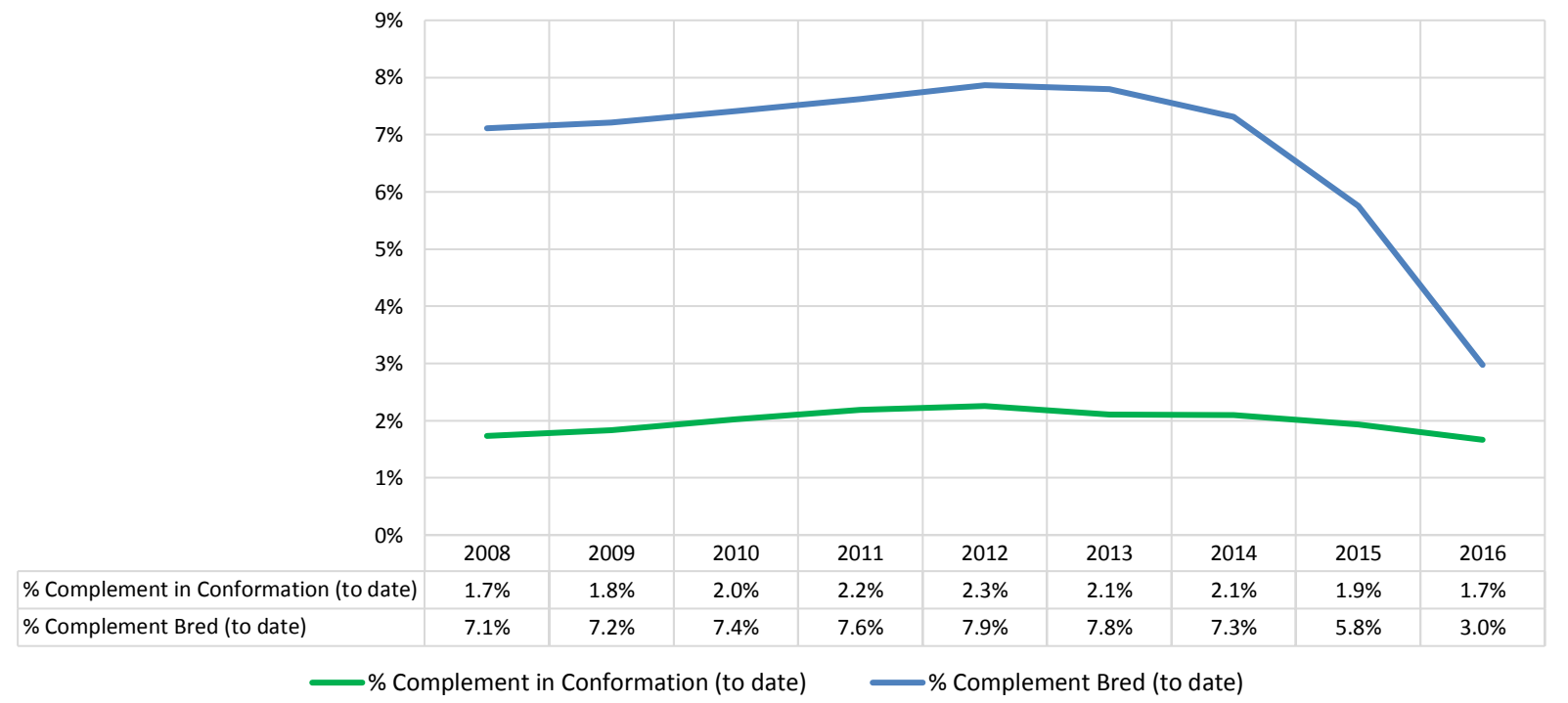
Breeding: Unique Individual Dogs & Bitches Bred Each Year



Dogs Registered (including FSS, Open, Conditional & Foreign)



% of Each Year's Litter Complement that have been Shown or Bred (to date)



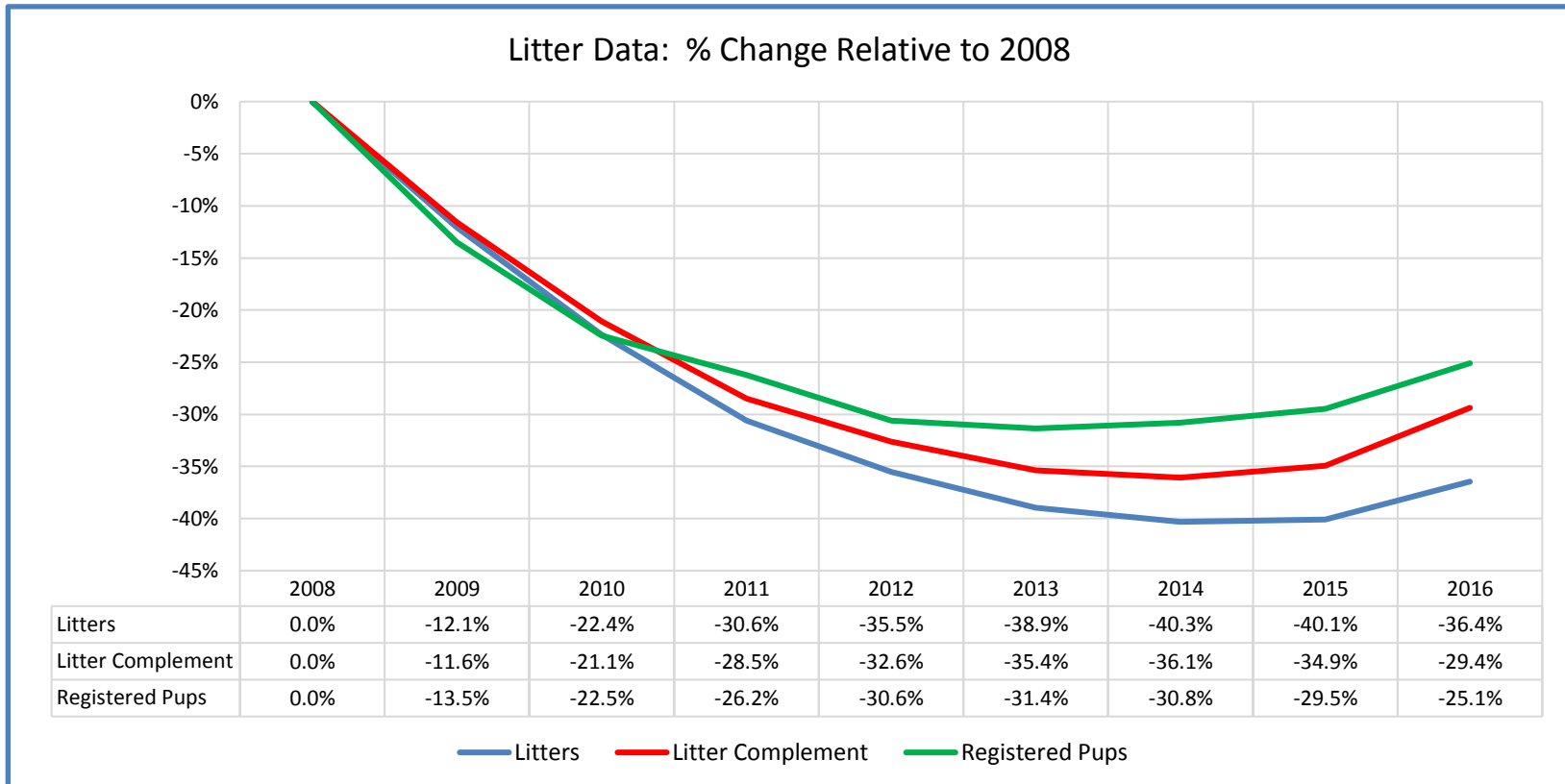
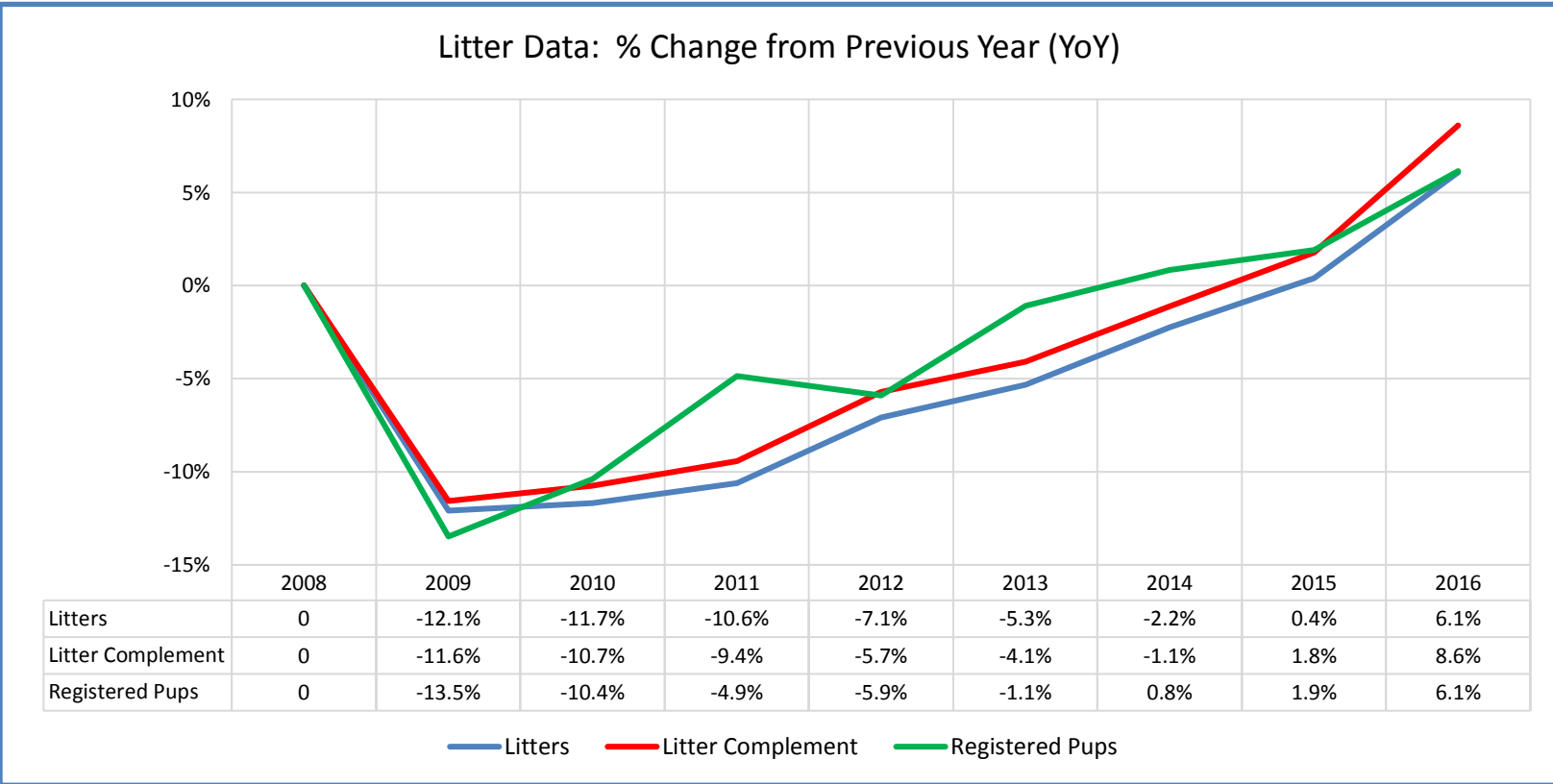
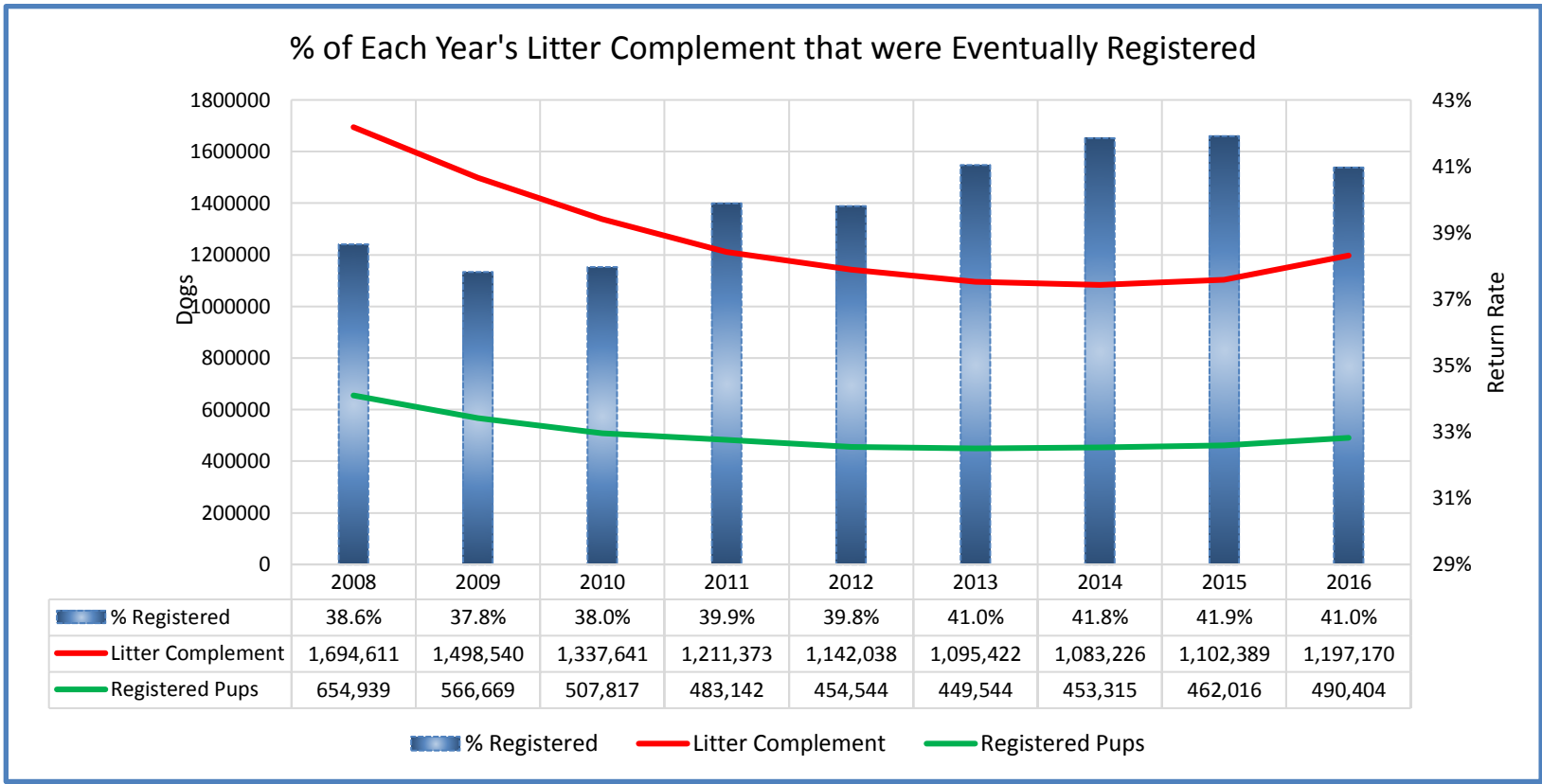
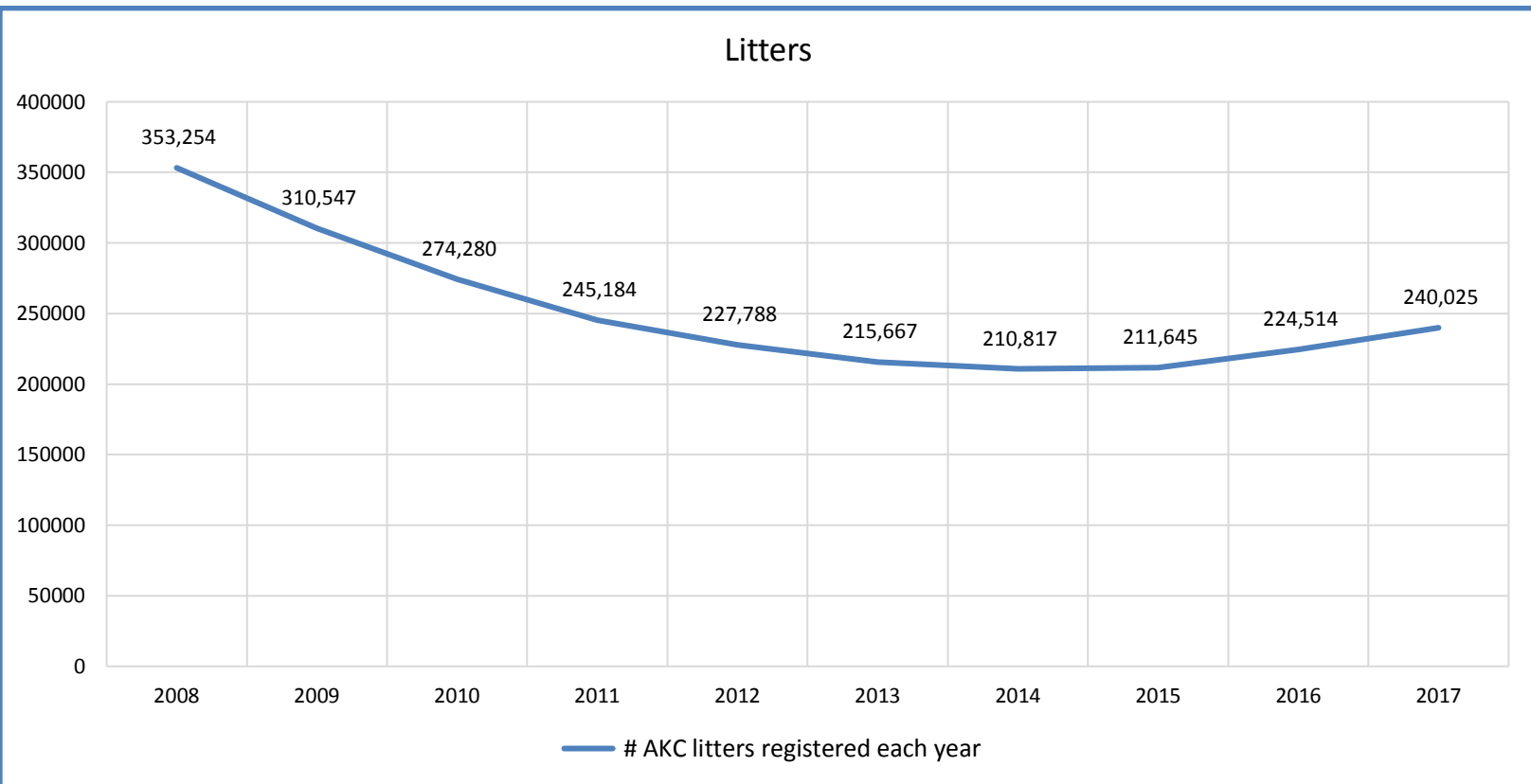
All Breeds												
Metric	2008	2009	2010	2011	2012	2013	2014	2015	2016	2017	Notes	
Litter #'s & Litter Related Stats	Registered Litters	353,254	310,547	274,280	245,184	227,788	215,667	210,817	211,645	224,514	240,025	# AKC litters registered each year
	Litter Complement	1,694,611	1,498,540	1,337,641	1,211,373	1,142,038	1,095,422	1,083,226	1,102,389	1,197,170	1,300,248	# Pups in each year's litters (known as the "Complement")
	Average Complement	4.80	4.83	4.88	4.94	5.01	5.08	5.14	5.21	5.33	5.42	Average # of pups per litter
	Individually Registered Pups (to date)	654,939	566,669	507,817	483,142	454,544	449,544	453,315	462,016	490,404	432,037	# Pups from each year's litters individually registered (to date)
	Actual Return Rate (to date)	38.6%	37.8%	38.0%	39.9%	39.8%	41.0%	41.8%	41.9%	41.0%	33.2%	% Pups from each year's litters individually registered (to date)
	Limited Registrations (to date)	76,687	73,704	69,855	73,137	74,823	78,697	84,575	94,946	108,970	108,729	# Limited Registrations from each year's litters (to date)
	% Complement Registered Limited (to date)	4.5%	4.9%	5.2%	6.0%	6.6%	7.2%	7.8%	8.6%	9.1%	8.4%	% Pups from each year's litters Registered as Limited (to date)
	Limited Revoked (to date)	1,494	1,555	1,300	1,428	1,435	1,539	1,602	1,626	1,184	475	# Limited Revoked Dogs from each year's litters (to date)
	Litters from Revoked Limited (to date)	1,397	1,414	1,207	1,287	1,323	1,417	1,461	1,393	945	369	Litters involving each year's Revoked Limited (to date)
	Complement Bitches in Conformation	27,174	25,526	24,702	23,939	23,337	22,552	21,736	21,058	20,165	13,372	# Bitches from each year's litters in Conformation (to date)
	Complement Dogs in Conformation	21,599	20,041	19,536	18,980	18,481	17,313	16,815	15,830	15,336	10,014	# Males from each year's litters in Conformation (to date)
	Total Complement in Conformation (to date)	48,773	45,567	44,238	42,919	41,818	39,865	38,551	36,888	35,501	23,386	Total from each year's litters in Conformation (to date)
	% Complement in Conformation (to date)	2.9%	3.0%	3.3%	3.5%	3.7%	3.6%	3.6%	3.3%	3.0%	1.8%	% of each year's litters in Conformation (to date)
	Complement Bitches Bred	99,514	89,541	81,166	76,379	75,420	72,329	68,331	57,807	35,319	6,267	Bitches from each year's litters that have been bred (to date)
	Complement Dogs Bred	58,249	50,887	45,355	41,488	39,310	36,741	34,448	30,576	22,523	4,630	Males from each year's litters that have been bred (to date)
	Total Complement Bred (to date)	157,763	140,428	126,521	117,867	114,730	109,070	102,779	88,383	57,842	10,897	Total from each year's litters that have been bred (to date)
% Complement Bred (to date)	9.3%	9.4%	9.5%	9.7%	10.0%	10.0%	9.5%	8.0%	4.8%	0.8%	% of each year's litters that have been bred (to date)	

Dog #'s & Dog Related Stats	AKC Dog Registrations	699,568	632,514	546,477	517,450	480,690	465,661	463,644	473,380	511,049	546,789	# Registered from AKC Litters during each year
	FSS Registrations	7,122	5,927	3,223	4,738	3,830	2,488	2,871	1,543	337	244	# of FSS Dog Registrations each year
	Conditional Registrations	3,070	2,572	2,182	2,047	1,953	1,869	2,113	2,074	2,104	2,162	# of Conditional Registrations each year
	Open Registrations	1,338	1,042	1,375	1,333	1,650	1,624	1,553	2,305	1,822	1,585	# of Open Registrations each year
	Foreign Registrations	7,694	7,027	6,769	6,501	7,010	6,733	7,081	7,778	9,056	9,977	# of Foreign-born Registrations each year
	Total Dogs Registered	718,792	649,082	560,026	532,069	495,133	478,375	477,262	487,080	524,368	560,757	Total Dog Registrations each year
	Unique Bitches in Conformation (each year)	76,250	73,330	71,315	69,949	68,266	66,321	64,157	62,556	61,322	60,075	Unique # of bitches in Conformation each year
	Unique Dogs in Conformation (each year)	63,602	60,988	58,989	58,056	56,932	54,709	52,645	50,895	49,297	47,962	Unique # of males in Conformation each year
	Total Unique in Conformation (each year)	139,852	134,318	130,304	128,005	125,198	121,030	116,802	113,451	110,619	108,037	Unique # in Conformation each year
	Unique Bitches Bred (each year)	306,115	278,652	246,996	220,146	202,804	191,172	185,586	185,789	195,234	203,131	Unique # bitches bred each year
	Unique Dogs Bred (each year)	200,932	183,914	162,915	144,908	131,224	122,857	118,030	116,331	119,417	122,059	Unique # males bred each year
Total Bred (each year)	507,047	462,566	409,911	365,054	334,028	314,029	303,616	302,120	314,651	325,190	Unique # bred each year	

% Change YOY	2008	2009	2010	2011	2012	2013	2014	2015	2016	2017	
Litters	N/A	-12.1%	-11.7%	-10.6%	-7.1%	-5.3%	-2.2%	0.4%	6.1%	6.9%	These %'s are calculated to show the change each year from the previous year.
Litter Complement	N/A	-11.6%	-10.7%	-9.4%	-5.7%	-4.1%	-1.1%	1.8%	8.6%	8.6%	
Registered Pups	N/A	-13.5%	-10.4%	-4.9%	-5.9%	-1.1%	0.8%	1.9%	6.1%	-11.9%	

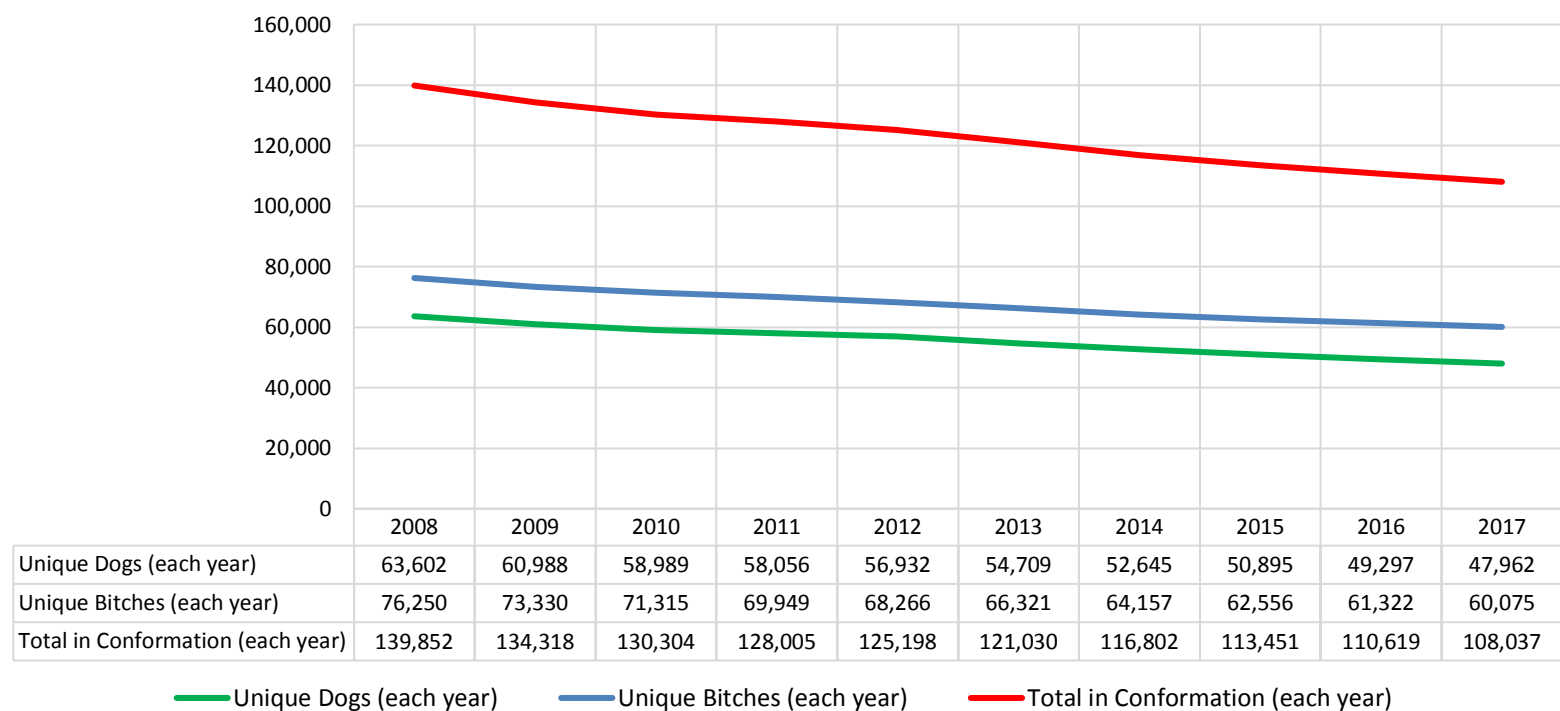
% Change Relative 2008	2008	2009	2010	2011	2012	2013	2014	2015	2016	2017	
Litters	0.0%	-12.1%	-22.4%	-30.6%	-35.5%	-38.9%	-40.3%	-40.1%	-36.4%	-32.1%	These %'s are calculated to show the change each year compared to 2008.
Litter Complement	0.0%	-11.6%	-21.1%	-28.5%	-32.6%	-35.4%	-36.1%	-34.9%	-29.4%	-23.3%	
Registered Pups	0.0%	-13.5%	-22.5%	-26.2%	-30.6%	-31.4%	-30.8%	-29.5%	-25.1%	-34.0%	

All Breeds

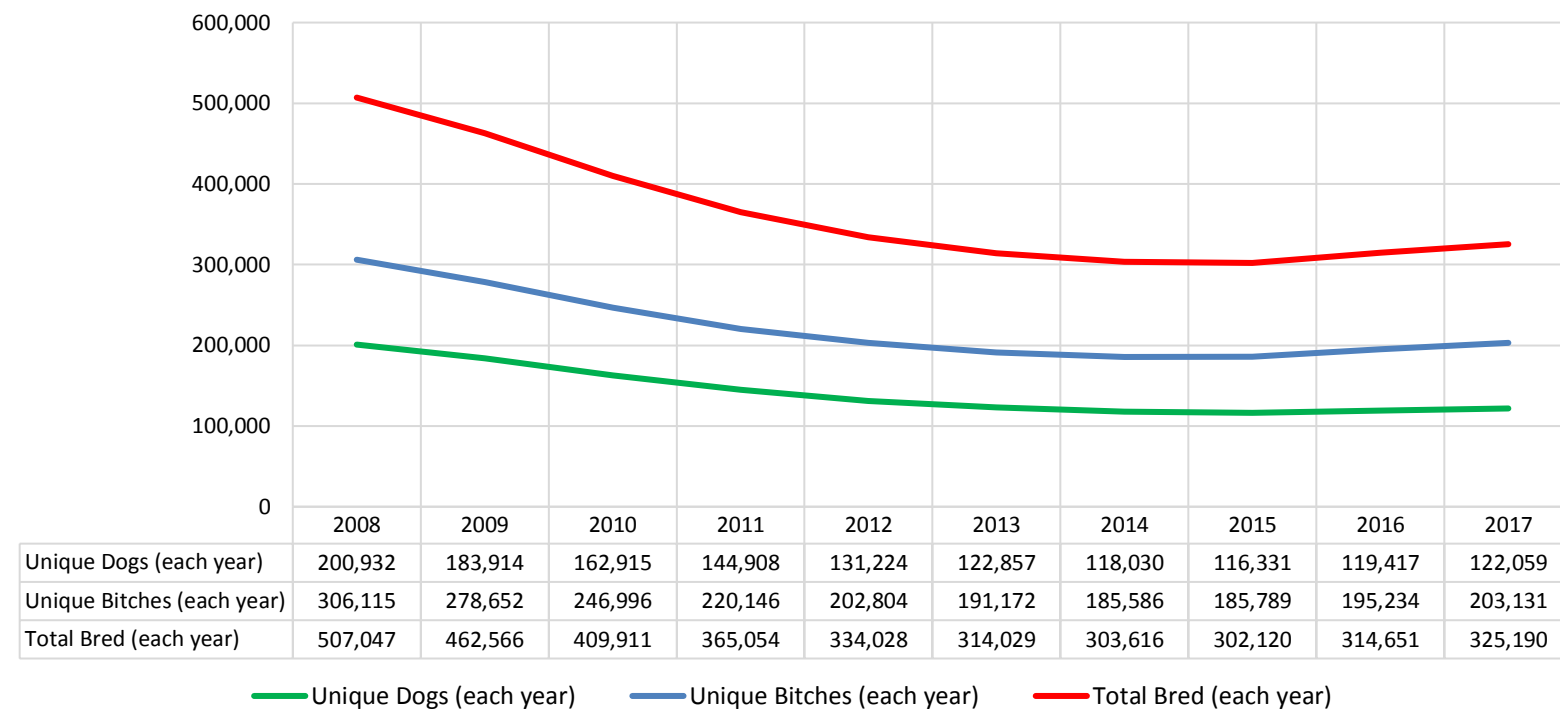


All Breeds

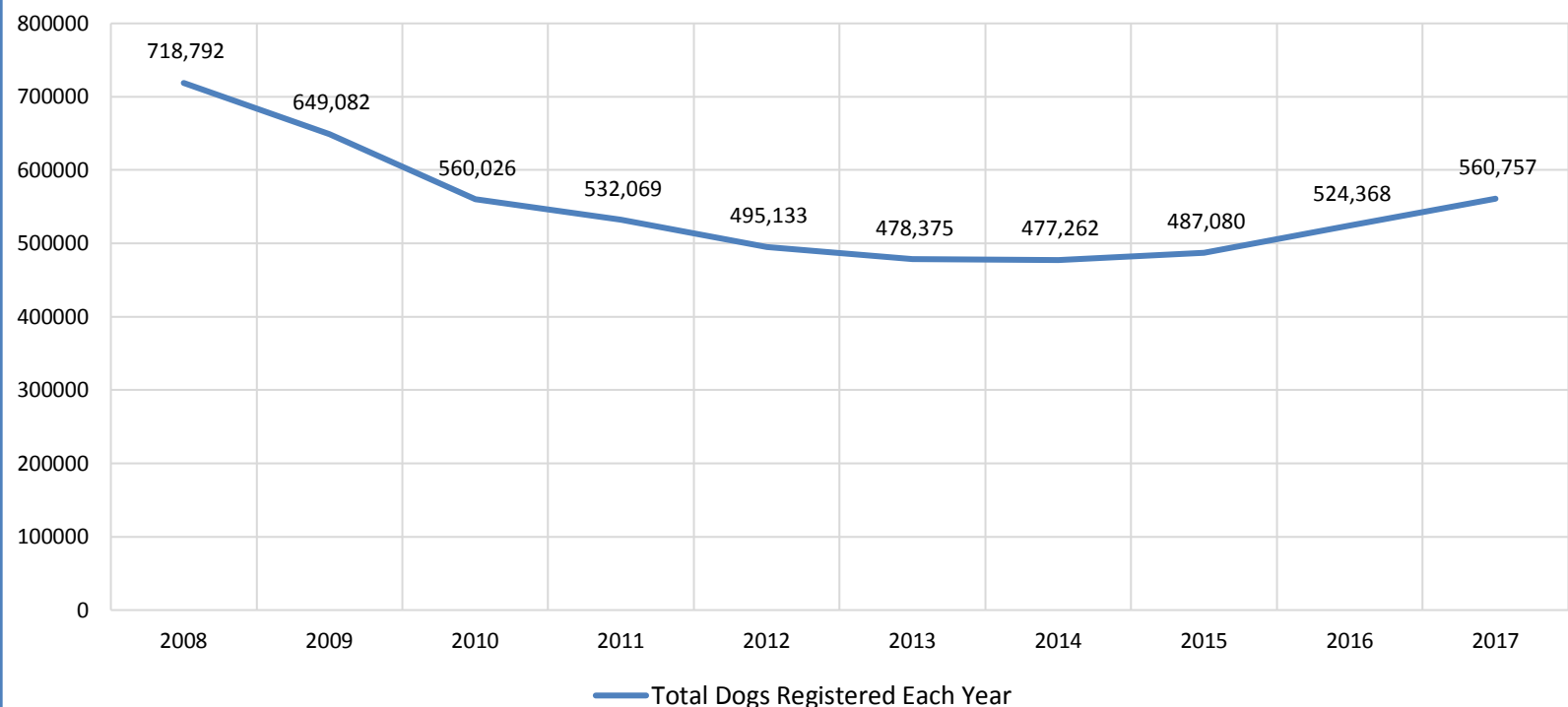
Competing: Unique Individual Dogs & Bitches in Conformation Each Year



Breeding: Unique Individual Dogs & Bitches Bred Each Year



Dogs Registered (including FSS, Open, Conditional & Foreign)



% of Each Year's Litter Complement that have been Shown or Bred (to date)

